

top  DRILL.com
FIRST IN VERTICAL DRILLING 



THE LARGEST
RANGE!
THE MOST
EXPERIENCE!

PRODUCT OVERVIEW



ENGLISH

MILLING – DRILLING – COUNTERSINKING – GRINDING

10.2014

topDRILL 130 RX speed-10



The topDRILL 130 RX speed 10 is the new highlight in vertical drilling technology. Both front and rear tool change can carry up to 10 tools on each side. The intelligent tool changer sorts the next tool during processing. No set-up times, and the high number of tools in conjunction with the simple and sophisticated programming make the RX speed 10 favorite in the pre-processing.

The particular advantages of this machine are:

- ☑ Drilling and countersinking with absolute precision in one clamping
- ☑ Design open top, no limit of the glass dimensions
- ☑ Torque control for deep countersinking without glass breakage
- ☑ Water-cooled high-performance spindles, each with 5.5 kW
- ☑ Dynamic tool change while processing
- ☑ Drilling diameter up to 80 mm, glass thicknesses up to 40 mm
- ☑ Program preselection and Laminated-glass-mode standard
- ☑ Job Overview with tool preview
- ☑ Solid ball screw for moving the lifting axis (Y-axis)



The installation next to a wall is possible



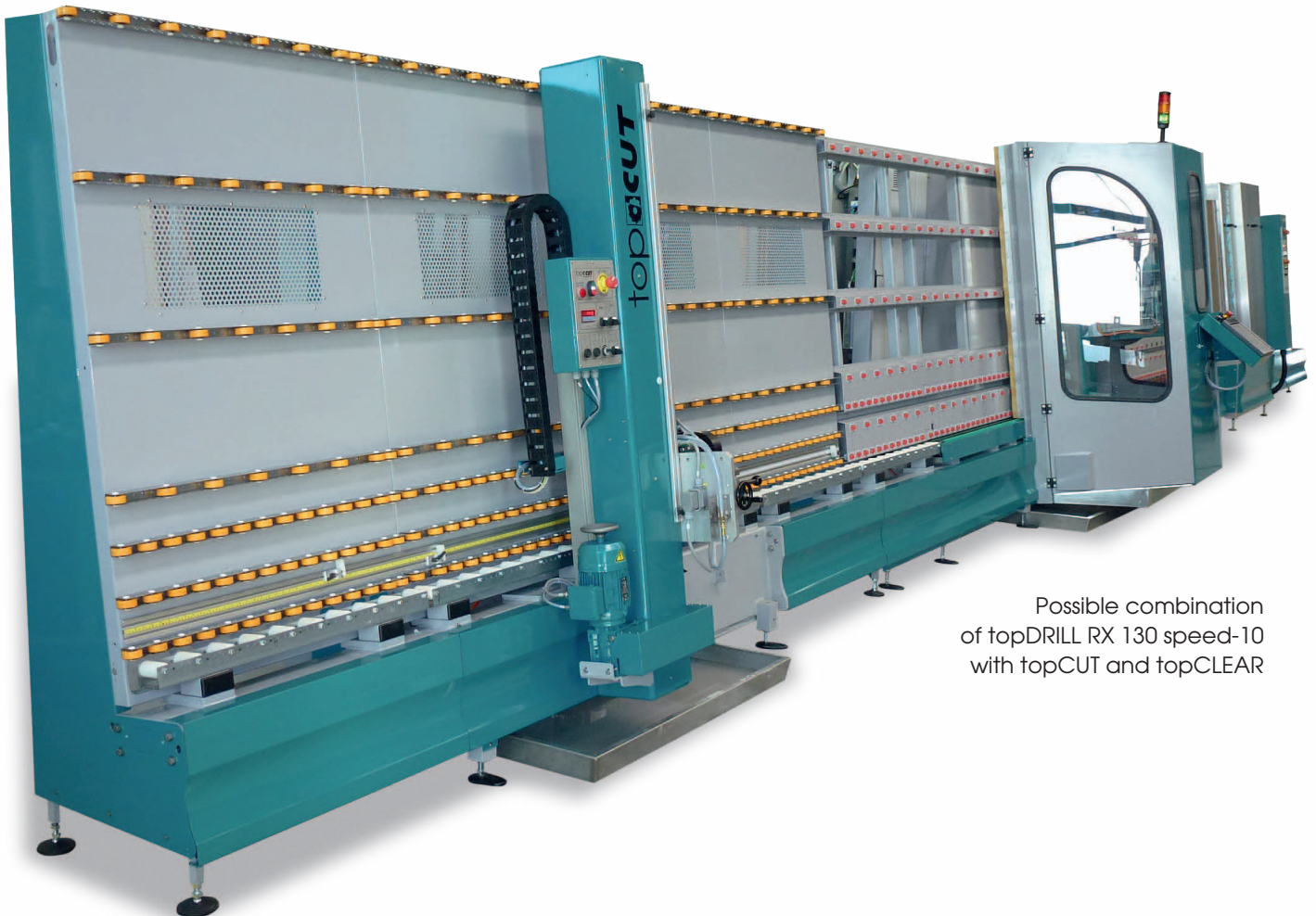
1300 mm 51"	open top	600 x 200 23 x 8"	3 – 40 mm 0,12 x 1,5"	4 mm 0,15"	80 mm 3,1"	600 mm 23,6"	20 m / min	3 mm / sec.	0 – 6000 RPM	2 x 5,5 kW	10 + 10	2250 kg 4960 lbs	4 x 2,1 x 2,3		

BEST-SELLER

topDRILL 130 RX speed-10

Available as additional equipment:

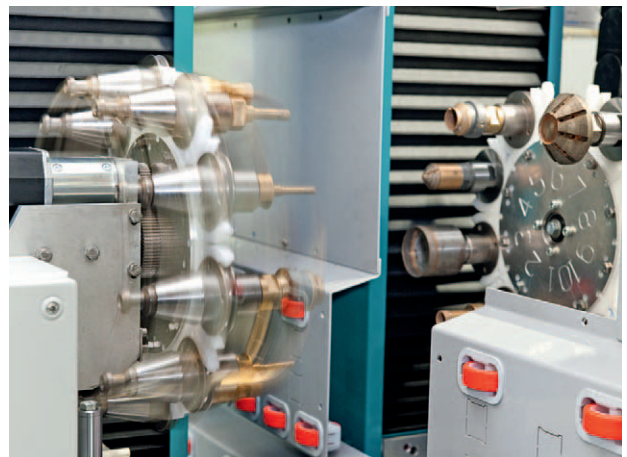
- ☒ Fully automatic dressing system, tool calibration from 3mm glass thickness
- ☒ Extension modules 1 or 2 mt, manual or automatic
- ☒ Barcode scanner or data import from ERP software systems



Possible combination
of topDRILL RX 130 speed-10
with topCUT and topCLEAR



Design open top through extreme stable
construction – no height limit of the glass



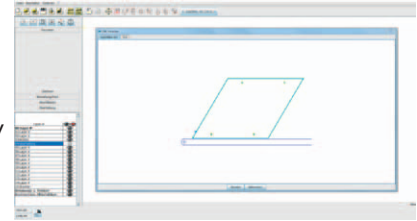
10 tool front + 10 tools rear



TDI-draft is a modern CAD drawing interface especially for flat glass processing, so that you can easily import dxf-data or create your own drawings. TDI-draft complements the drawing data with the necessary drilling and processing information and creates a machine readable tdi-format.

Take advantage of TDI-draft alone or in addition to an integrated data interface for automatic data exchange with your topDRILL system. Data interfaces are i.e. available for A + W, Bitec, FeneTech, Hanic, Lisec, ...

- ☑ Dxf-Import and -export (also automatically possible)
- ☑ Shapes are automatically machinable
- ☑ Automatic detection of drilling diameter etc.
- ☑ Adds drilling- and countersinking depth manually or automatically
- ☑ Manages your operator and several topDRILL - systems
- ☑ Adds Working sense, parking position, VSG mode, serial mode...

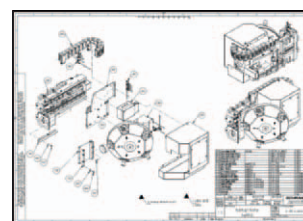


All topDRILL machines (beginning of type nc) are equipped as standard with network interface. This provides the possibility of data exchange via Ethernet, FTP, or via USB. Connection options are on the front at the control panel or directly back at the electrical cabinet!

Service, spare parts

As a professional, you know that not only the quality of the machine and the components which are used is important. Fast after-sales service and availability of spare parts is assured

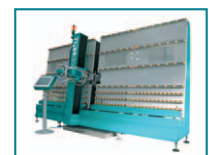
Our entire topDRILL Engineering is in Austria, a large part of the production parts are also „made in Austria“. Of course, you can expect that the machines and the items are drawn according to the state of the art technology with the latest 3D programs. We offer you not only for the current machines the best service and availability, older and existing installations of previous generations are also supplied promptly * with spare parts!



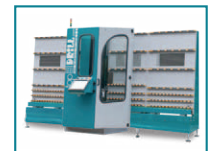
G1 from 1996



G2 from 1998



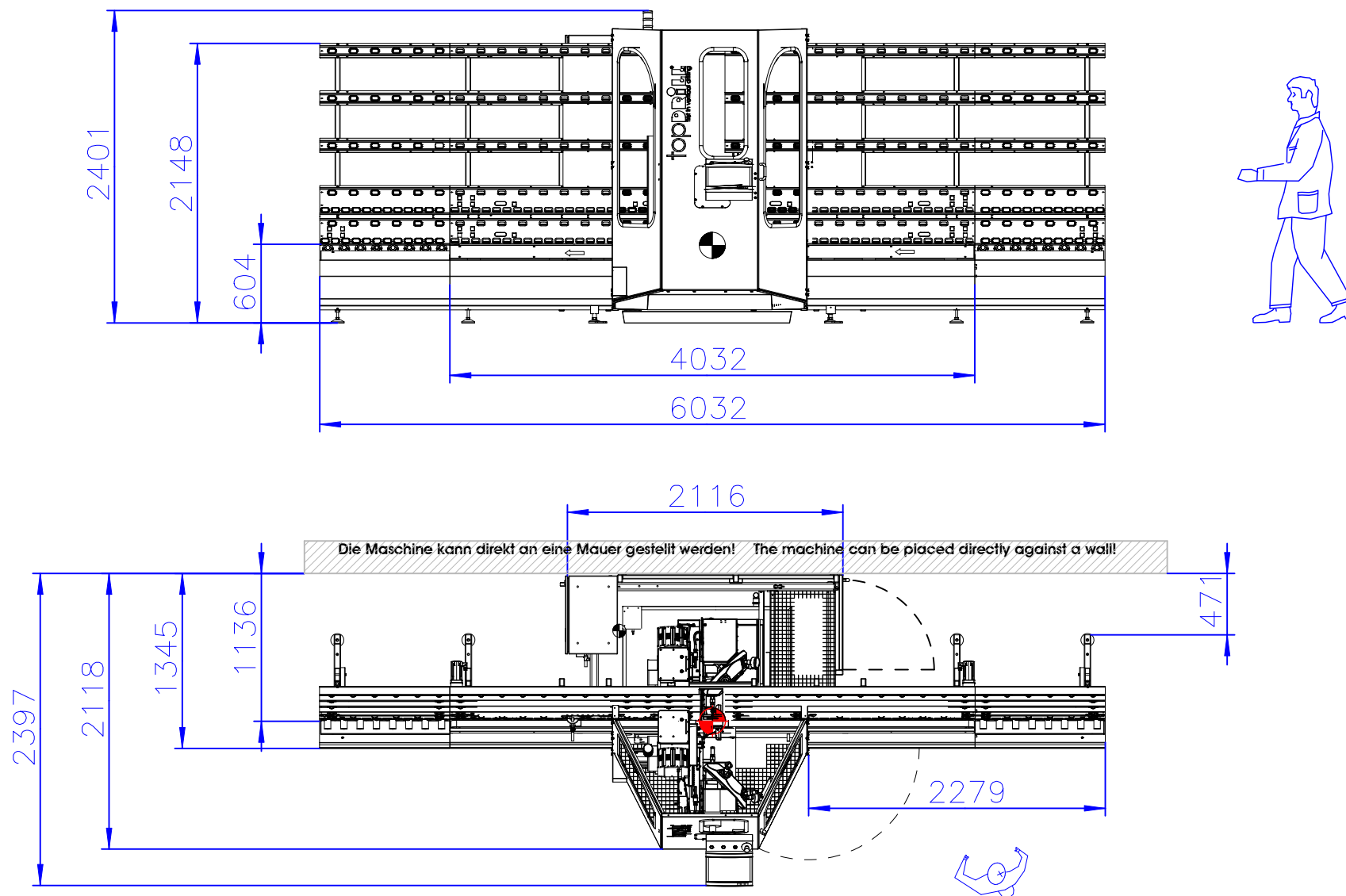
G3 from 2004



G4 from 2011



G5 from 2012



www.topdrill.com

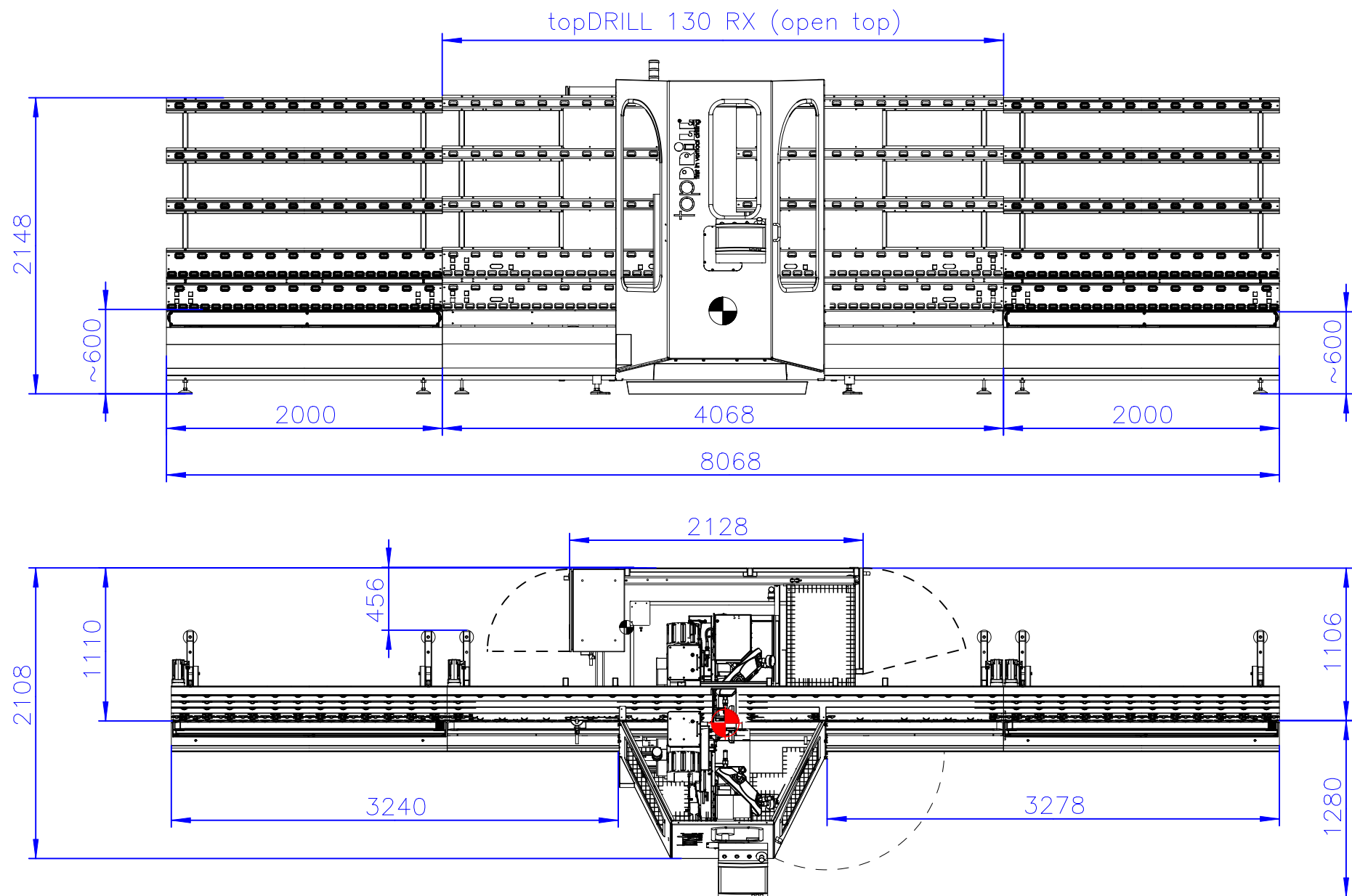
topDRILL 130 RX speed-10 (working direction on request)
basic length 4mt with extension 1mt + 1mt each side
connection with other machines in line is possible!

Diese Zeichnung ist unser geistiges Eigentum und darf weder vervielfältigt noch Dritten zugänglich gemacht werden!

Datum:
G4-type (2014)

Schraml
 GLASTECHNIK

A-4463 Grossraming, Lumpfgraben 49
 Tel. +43-(0)7254-8100
 Fax +43-(0)7254-8110



topDRILL 130 RX smart-5 / topDRILL 130 RX speed-10 (G4-type)
Layout with additional extension modules (automatic, 2mt length)
working direction, total length and connection to washer on request

Diese Zeichnung ist unser geistiges Eigentum und darf weder vervielfältigt noch Dritten zugänglich gemacht werden!

Datum:
12.08.2013

Schraml
 GLASTECHNIK

A-4463 Grossraming, Lumpgraben 49
 Tel. +43-(0)7254-8100
 Fax +43-(0)7254-8110

References:



topDRILL.com
FIRST IN VERTICAL DRILLING



Nothing is stronger than an idea whose time has come!



Schraml Glastechnik GmbH
Lumpfgraben 49
A-4463 Grossraming
Austria – Europe

Tel. +43-(0)7254-8100
Fax. +43-(0)7254-8100-10
Mail: info@schraml.at
Web: www.schraml.com
www.topdrill.com

* The pictures of the machine are partly made with optional equipment. All mentioned trademarks and company names are property of their respective companies. The current scope of supply and the full list of optional positions you like to learn from your sales partner or Schraml Glastechnik GmbH. topDRILL, topCUT, INNODIA and topCLEAR are registered trademarks of Schraml Glastechnik GmbH. All details are without guarantee, modifications and further developments are always reserved.